

Historic, Archive Document

Do not assume content reflects current scientific knowledge, policies, or practices.

HYDRANGEA P. G.

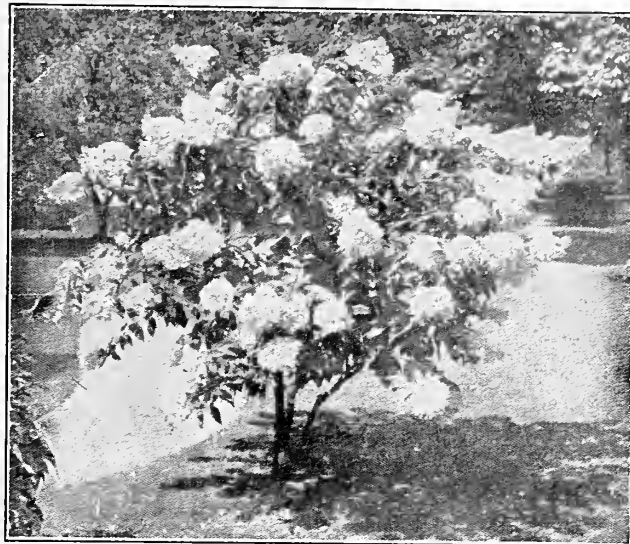
Now **3** FOR ONLY \$**1.10**

We have sold tens of thousands of Hydrangea P. G. this fall but still have a limited supply of this most popular of all the flowering shrubs and while they last, will mail you 3 at the ridiculously low price of \$1.10, or better still, 10 for only \$3.00. You can afford at this price, to make large plantings which will add hundreds of dollars to the value of your property at very little cost.

These are two-year-old plants, 18 inches high, sold regularly at 75c each but now, while the stock lasts, to make a complete clearance, our price is

3 FOR \$**1.10**
ONLY

10 FOR \$**3.00**
ONLY



Hydrangea P. G.

BUTTERFLY BUSH
AND
PURPLE LILAC

Both FOR ONLY \$**1** **HYDRANGEA A. G. 45c Each**

(Hills of Snow)

OTHER SHRUBS SPECIALLY PRICED

If you wish a diversified planting of beautiful flowering shrubs to bloom from spring to fall, here is your chance to put over such a planting at less than half the usual cost, as we have made a tremendous slash in price to effect a complete clearance of all the shrubbery we have for sale this fall. Order at once, NOW, and order all you have room to plant for it may be years before another such opportunity comes your way. Regular price, 45c to 60c each; big two-year shrubs.

WEIGELIA VARIEGATED
BUTTERFLY BUSH
JAPANESE BARBERRY
SPIREA ANTHONY WATERER
SYRINGA
SPIREA VAN HOUETTI

WEIGELIA ROSEA
SNOWBERRY
FORSYTHIA
DEUTZIA PRIDE OF ROCHESTER
BUSH HONEYSUCKLE
DOGWOOD

4 FOR \$**1.00**

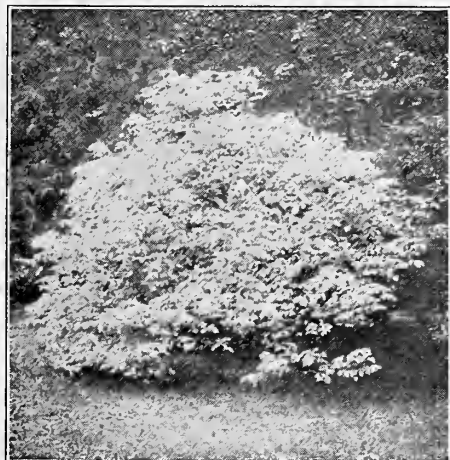
12 FOR ONLY \$**2.85**

"CLEANUP" PEONY SPECIAL

Fall is peony time. Fall planted peonies will do much better than those planted in the spring, and now, at just the right time to plant, we bring you the greatest peony offer ever made. We have several thousand fine three to five eye roots that should bloom next spring which we do not have room to replant so to effect a quick and immediate clearance, you may have them at the ridiculously low price of

4 ALTHEA \$1.00
RED, WHITE, PINK AND PURPLE

MIXED COLORS, 3 FOR \$1.00; PER DOZ. \$2.85
Peonies, in separate colors. Red, White, Pink, Yellow, 2 for \$1.00



Cornus or Dogwood

62,57
FIFTH ANNUAL
" "
49c
ROSE SALE



GROWERS' SALES CO.
CLINTON, N. J.

Sec. 435 1/2 P.L.&R.
U. S. POSTAGE
Paid
CLINTON, N. J.
PERMIT No. 1

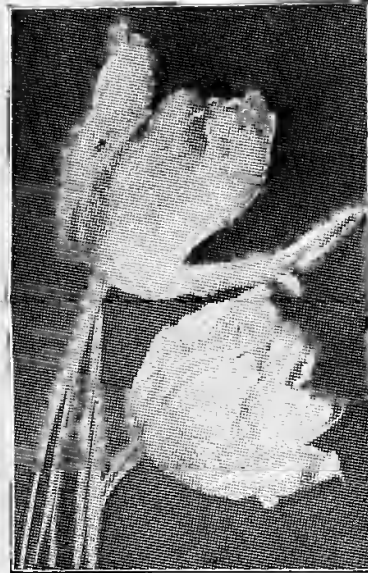
Clearance Sale of Fall Bulbs at Bargain Prices

PARROT, PICOTEE and PEONY TULIPS

GORGEOUS DARWIN TULIPS MIXED

THREE VERY UNUSUAL VARIETIES

You will surely want some of these rare and little known varieties. They are unusual; distinctive; wonderful. The Parrot are gorgeous in extreme in their fantastic shapes and brilliant colors. These are illustrated below. The Picotees are white with an edging of rose-pink giving them the appearance of being water colored. Peony Tulips are equally attractive and unusual. In this great clearance sale we have arranged a special treat for you by giving 10 of each of these unusual and distinctive varieties for only \$1.69 for the 30 wonderful Tulips.



Parrot Tulips

SPECIAL SALE PRICE ALL **30** FOR ONLY **\$1.69**

Paperwhites

Paperwhite Narcissus are one of the most popular of the winter-flowering bulbs. In bloom in just a few weeks time you can have them in flower for Christmas and by starting them at intervals they can be kept in bloom until Easter. They grow best in water with pebbles. Placing half a dozen or more in a bowl imbedding them firmly in small stones or gravel, setting them away in a dark place for a week or ten days to root, keeping the bulbs well covered with water and then bringing them out into the light they will bloom for you without any other care in a very short time.

10 for Only \$1.00

GIANT CROCUS NOW 50 FOR \$1.45
100 ONLY \$2.65

Early Single Tulips

Your fall garden plans should include a large planting of Early Single Tulips as they are without question the most brilliant and showy of any flower growing and this brilliancy is enhanced by their blooming in the early spring when they have no competitors. We have a limited supply of these bulbs specially priced for a quick clearance so by all means order Single Tulips and order them At Once.

25 for \$1.00

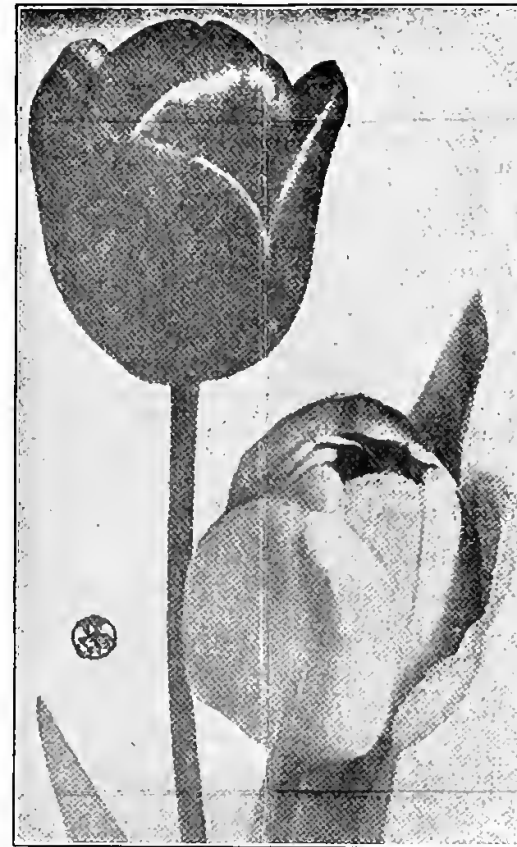
Early Double Tulips

A large planting of Early Double Tulips should also be included in your planting plan for while they are outclassed by the Single varieties in the matter of brilliancy of color their blooming season is longer. The flowers are of greater substance making a great show when in bloom as many of them are almost as large and showy as a Peony. Special Clearance price

30 for \$1.00



DOUBLE TULIPS



La Tulipe Noir Pride of Haarlem

Bedding Hyacinths MIXED

Our Hyacinth Mixture is especially prepared for us by one of the best Holland growers and comprises a gorgeous color range and will give you a wonderful display planted either in beds or borders.

Hyacinths are scarce and high in price this fall. Our stock is limited but while they last we are pricing them for a quick clearance at a price you will be unable to equal anywhere this season.

12 for \$1.25 25 for \$2.45

CLEAN-UP SPECIAL **40 For \$1.00**

Breeder Tulips

ASSORTED VARIETIES

The Breeder Tulips are the variety in which you find such wonderful deep tints ranging from maroon and purple to terra-cotta and are absolutely without stripes or feathers. They have recently come in to immense popularity because of their wonderful coloring and enormous flowers which are produced on tall stems like the Darwin and bloom at about the same time. Regular prices run up to 90c per dozen. For a quick clearance we will mail you

30 for \$1.00

Narcissus

Narcissus are especially valuable for naturalizing in the woods, in odd corners, under trees, along streams, etc.; for bordering walks and paths and for grouping in the Hardy Borders, for cutting and for forcing in pots in the window or the green-house so you cannot possibly have too many Hardy Narcissus.



NARCISSUS

10 for \$1.00
25 for only \$2.35

Named Tulips Assorted

Following the tremendous selling of the past two months we find we have a surplus of some of our finest Named Darwin Tulips including Bartigon, crimson-carmine; Clara Butt, salmon-pink; Gretchen, silvery-pink.

La Notre, delicate lavender; Farne Combe Sanders, brilliant dark rose-red; Princess Elizabeth, bright rose-pink; Ingles-Combe Yellow; Wm. Copeland, lilac-rose; Pride of Haarlem, rosy carmine with a blue base and La Tulipe Noir, the Great Black Tulp. These Tulips are gorgeous in extreme and planted in beds or borders of solid or contrasting color they produce an effect demanding instant attention. For an immediate clean-up of all remaining stock we will send you 30 of any variety for only \$1.00. Unless you order immediately we may be sold out on the particular variety you want. If so, we will mail you the nearest in color to it. While they last, very special at only



Keizerskroon

30 for \$1.00

YOU SAVE 51c ON EACH ROSE YOU ORDER DURING OUR GREAT FIFTH ANNUAL 49c ROSE SALE. PARTICULARS INSIDE.

Fifth Annual Forty-Nine Cent Rose Sale

Five years ago we offered our customers an opportunity to purchase two-year-old, field-grown Roses of the dollar grade at 49c each as a special winter advertising leader. The response was so immediate and general that this Great 49c Rose Sale has become an established institution to which our customers look forward and on which they depend to replant and add to their Rose Gardens, at less than half the usual cost. Each year this sale is featured with increasing success. Every year sales have doubled over that of the preceding year which is pretty conclusive evidence of its popularity.

This being the fifth of these Great Annual 49c Rose Sales, marking as it does a mile stone in our business progress, we determined to make it bigger and better; the Greatest of All Pre-Season Sales. To do this we have added more varieties including many of the newest and most expensive, such as Souvenir de Claudius Pernet, the Perfect Yellow Rose so much in demand; Souvenir de Georges Pernet, another new Rose of exceptional merit and distinctive coloring as well as many others. In all we give you 89 choice varieties to choose from at less than half regular price; the Cream of the Rose Fields. The varieties that are most in demand are the ones we offer in this Great Fifth Annual 49c

Rose Sale and if you order NOW, you may have your choice of any of these grand Roses for only 49c each. As many as you want or as few as you want. Whether it is one or a thousand, there are no conditions or restrictions. Of course, the more you buy the more you save. They are 49c each, 10 for \$4.75, 100 for \$45.00.

We know of no one who can duplicate this wonderful offer. The usual price is \$1.00 and up so why not accept this opportunity to secure all the Roses you will have room to plant next spring. Think of saving at least 50c on each bush you order. Still more if you order in quantity and none but the best and most wanted varieties. Plant 89 varieties and you will have a Rose Garden equipped by few, excelled by none. Won't you share in this Great Event? All Roses sold during this Fifth Annual 49c Rose Sale will be delivered during late March or early April. Ordering NOW guarantees early delivery, choice stock at less than half price and a full summer's enjoyment of your Rose Garden. Make your selections from the varieties listed below not forgetting to include several of the Great Climbing Roses. Remember this offer is good only until January 1, so make your selections and SEND IN YOUR ORDER NOW.

Now 49c EACH

89 CHOICE VARIETIES AT LESS THAN HALF PRICE

\$1.00 Each After Jan. 1



K. A. Victoria

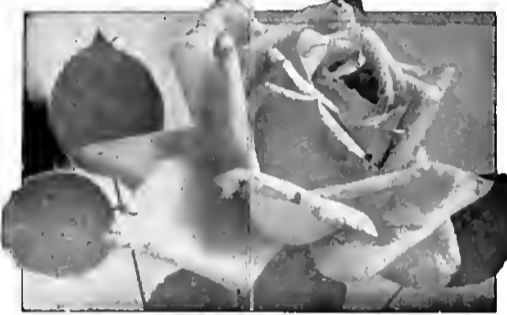
- AMERICA**—Large, rose pink, fine shaped flowers, sweetly scented, carried on long stems. Deep glossy green foliage; almost thornless.
- AMERICAN BEAUTY**—Flowers crimson, varying shades deep pink, of fine form, substance and size, very fragrant; foliage strong and of good color; growth robust, sending out long, strong and well turned stems.
- ANNE DE DIESBACH**—Bright clear pink of largest size; fine bud and open flower. The famous "Glory of Paris".
- BARONESS ROTHSCHILD**—Pale pink; large and symmetrical in form; acanthous. Each rose is set in a cup of beautiful foliage.
- BETTY**—Deliciously fragrant blooms of large size, full and beautiful; exquisite coloring, copper overpale with golden yellow. Strong and vigorous.
- BRIARCLIFF**—Sport of Columbia. Color finer and clearer pink than the parent.
- CHEERFUL**—Flowers large and full, of good shape, opening in all kinds of weather, color pure orange, the shadings overblending the petals, producing a pleasing and striking effect; growth vigorous and bush free flowering throughout the season.
- CLIO**—Silvery flesh, with center shaded clear pink; large, globular. Very fine.
- COLUMBIA**—A fine bicolor; perfectly double to the very center of the full flower. A true pink that is entrancing; practically thornless.
- CONSTANCE**—Buds long and pointed streaked with red, becoming large, full flowers of shades of yellow.
- CRUSADER**—Flowers double, a rich velvety crimson. The growth is heavy and the flower stems strong; free flowering.
- DBL. WHITE KILLARNEY**—A pure white sport from White Killarney but has a much larger bud and many more petals than its parent.
- DUCHESS OF WELLINGTON**—Long, pointed buds, blooms intense salmon-yellow, flushed crimson, hanging in lighter yellow.
- EDWARD MAWLEY**—One of the finest of all dark crimson roses.
- ETOILE DE FRANCE**—Rich velvety crimson, center ruby-red, large and double, likes hot weather.
- FRANCIS SCOTT KEY**—Large crimson buds and blooms of good form, very double; slightly fragrant, good foliage.
- FRAU KARL DRUSCHKI**—Pure snow-white; long pointed buds, large, full flowers, free and constant. Not very fragrant.
- GENERAL JACQUEMINOT**—Crimson-rose-red, large, full, very fragrant. One of the most popular roses.
- GENERAL McARTHUR**—Flowers bright scarlet red, large and full; buds elongated opening well. One of the finest and most fragrant roses grown.

- GEORGE ARENDS**—Clear, tender pink, good bud and perfectly formed flower. Few thorns. A strong grower.
- GEORGE DICKSON**—Color dark velvety crimson, splendid shape and good substance.
- GLOIRE LYONNAISE**—White lined yellow.
- GOLDEN EMBLEM**—Flowers of clear yellow, showing buds with a tinge of delicate crimson on the outer petals; loose on strong upright stems; foliage a handsome glossy green.
- GOLDEN OPHELIA**—Deep golden yellow in the center, fading slightly toward the outer petals; of perfect symmetrical form and the plant is a sturdy, stiff-stemmed grower.
- GORGEOUS**—Flowers large, full, deep orange-yellow, heavily veined with red-dish center.
- GRUSS AN TEPLITZ**—Brightest scarlet-crimson and flowering profusely. It grows tall and bushy and is quite hardy, even in cold sections.
- HADLEY**—Deep velvety crimson, retaining its color in all seasons. Buds well formed; flowers large, full and free, with most delicate fragrance.
- HARRISON'S YELLOW**—Bright yellow flower covering the bush early in the season. Very vigorous and with perfect healthy foliage.
- HERMOSA**—Pleasing shade of clear pink. An old rose that will always be in demand. Vigorous, hardy and very favorably known.
- HOOSIER BEAUTY**—Color glowing, deep crimson with darker shadings. Upright, slender. Buds long and pointed.
- H. V. MACHIN**—Flowers an intense, dark crimson, buds elongated and blooms of exquisite size. Foliage deep green color.
- HUGH DICKSON**—Intense crimson, shaded scarlet. Very large, full and magnificent form. Very pronounced sweet fragrance.
- J. B. CLARK**—Intense, deep scarlet, heavily shaded blackish crimson, large, full, with long stems.
- JONKEER J. L. MOCK**—Rich carmine changing to bright pink with a silvery reflex. Stems strong and erect.
- JULIET**—The petals outside are almost white, and inside vary from rose to crimson. Beautiful in bud and half-open state; always fragrant. A vigorous summer bloomer.
- KAISERINE AUGUSTE VICTORIA**—White, center petals scarlet, low, large, full and of good form.
- KILLARNEY**—Bright shell-pink, long pointed buds with large flowers. Very free and perpetual flowering.
- KILLARNEY BRILLIANT**—Same growth and size as Killarney and like it carries considerably in color. In shady wash.



Ophelia

- KILLARNEY QUEEN**—Crisp-pink, vigorous grower.
- LADY ALICE STANLEY**—Outside of petals coral-pink, inside pale flesh-pink.
- LADY ASHTOWN**—Carmine-pink, shading to golden yellow at base of petals. Blooms are large, globular, and well formed.
- LADY HILLINGDON**—Deep orange-yellow; good size; long and pointed bud.
- LADY URSULA**—Large, well-formed blooms with thick petals of light flesh-pink, without much shading; good fragrance.
- LA FRANCE**—Flowers a decided shade of pale pink suffused with a silvery blue, large, full and globular, of good form and substance and pleasantly fragrant.
- LAURENT CARLE**—Brilliant, velvety carmine; flowers large, of perfect form and delightful fragrance; a good grower and abundant free bloomer.
- LOS ANGELES**—A luminous flame-pink, toned with coral and shaded with transparent gold at the base of the petals; buds long and pointed which expand into a beautiful and fragrant flower.
- LOUISE CATHERINE BRESLAU**—Long, oval buds of coral-red, shaded with chrome-yellow, developing into fragrant, globular flowers which present other novel shades. A vigorous grower.
- LULU**—Buds long and delicately formed, shaded orange-pink and copper. The open flower is flat and almost single but retains the color well. Bush is vigorous and highly resistant to disease.
- MAGNA CHARTA**—Bright rose; very large and double; of good form, and fragrant.
- MAMAN COCHET**—Coral-pink, shaded with salmon-yellow and outer petals splashed red; large and full, and well formed.
- MARGARET DICKSON**—White with flesh red; petals large and firm of texture; quite fragrant.
- MARGARET DICKSON HAMMILL**—Delicate creamy yellow, edged with carmine at base of petals.
- MISS AMELIA GUDE**—Bud long, pointed; flower medium size, deep yellow center shading to cream; fragrant. Foliage dark green.
- MISS LOLITA ARMOUR**—Its fragrant blooms develop from well-shaped buds, chrome-yellow at the base, shading to orange and copper hues on reverse of petals.
- MME. ALEXANDRE DREUX**—Yellow bud, opening to a high centered flower with sharply defined petals of deep yellow splashed with orange.



Rose America

- MME. BUTTERFLY**—Flowers a brilliant pink suffused apricot and gold, buds surrounded.
- MME. CAROLINE TESTOUT**—Clear, bright satiny pink. The rose that helped make Portland, Oregon famous.
- MME. EDOUARD HERRIOT**—Coral-red, shaded with yellow and bright rose scarlet. Strong with bright green glossy foliage.
- MME. LEON PAIN**—Silvery flesh-pink center yellowish orange, large full and free.

- MME. RAVARY**—Orange-yellow.
- M. P. WILDER**—Crimson. Fall extra large.
- MRS. AARON WARD**—Center Indian-yellow with edge primrose medium-sized flowers, free and full.
- MRS. AMBROSE RICARDO**—Flowers quite double, of good form, a bright flash-pink in color overlaid with a delicate shade of yellow and delightfully fragrant.
- MRS. A. R. WADDELL**—Copper-rose-red, opening to semi-double, deep red-dish saffron flowers, freely produced.
- MRS. JOHN LANG**—Soft pink, large, full perfectly formed.
- MRS. MACKELLAR**—Flower center solid deep citron or delicate para canary yellow, becoming partly primrose-white as the blooms expand. Fragrant.
- MRS. WEMYSS QUIN**—Canary-yellow, shaded with crimson-orange.
- MY MARYLAND**—Salmon-pink.
- OLD GOLD**—Vivid reddish-orange, with rosy red and apricot shadings, medium size; semi-double. Strong grower.
- OPHELIA**—Blooms large in size, full and perfect in form. Attractive light salmon shading to light yellow.
- PAUL NEYRON**—Deep rose-pink, flowers of immense size. Claimed by many to be the largest rose in existence.
- PERSIAN YELLOW**—Flowers deep golden yellow, medium size, semi-double and globular in form; growth robust and hardy.
- PHARISAER**—Rosy white, shaded with salmon; large and full.
- PREMIER**—Dark pink flowers of full size, and pleasing fragrance, borne singly on stiff, thornless stems.
- RADIANCE**—Brilliant, rosy salmon-pink. Large, free and of beautiful form with sweet fragrance.
- RED RADIANCE**—A glowing crimson with all the magnificent qualities of the Radiance.
- RICHMOND**—Scarlet lightly shaded crimson.
- ROSE MARIE**—This is a grand rose of the very highest merit. Older first described by a bright center-rose red.



CLIMBING AMERICAN BEAUTY

The Climbing American Beauty is truly the wonder of Rose Land. One plant will produce twenty times as many blooms as the old American Beauty. Over 900 blooms and buds have been counted on one four-year-old bush. It is perfectly hardy and the foliage is green and beautiful until the snow flies. During this Great Annual Rose Sale the price is just:

THE THREE FAMOUS DOROTHY PERKINS CLIMBERS

The Dorothy Perkins Climbing Roses are probably the best known and the most generally planted of all the Climbers. Being extremely strong, hardy growers that bloom profusely during the season, they are the very best all-purpose rose for covering quickly fences, arbors, and buildings, etc. Special sale price, red, white or pink.



Dorothy Perkins

Four of the Best Climbers

To make this sale of more than ordinary interest to the lovers of Climbing Roses, we have included four of the very best of all the Climbers at the special sale price of 49c—varieties never before offered at this low figure.

- AMERICAN PILLAR**—Color bright pink.
- BESS LOVETT**—Clear, bright red, resembling the bloom of the American Beauty but much brighter in color.
- SILVER MOON**—A pure white Climber. Blooms very large.
- MARY WALLACE**—Clear rose-pink flowers often exceeding four inches in diameter.

Special at
49c

FIVE CLIMBING MONTHLY ROSES

The Climbing Monthly Rose is a valuable addition to the Climbing Rose family being an exact counterpart of the bush rose on sturdy climbing stock that often attains a height of ten to fifteen feet. In a single season, blooming profusely in the spring and producing blooms throughout the season, they combine the advantages of the sturdy Climbers and the profuse-blooming qualities of the Monthly Garden Rose. We offer five of the best varieties selling regularly at from \$1.00 to \$1.50 each at a special price which puts them within the reach of all during this Great Annual Rose Sale. This set consists of the Climbing Texas, an Teplitz, velvety-crimson; Climbing Los Angeles, luminous flame-pink; Climbing Sunbeams, orange copper and golden yellow; Climbing Lady Ashtown, delicate pink; Climbing Orleans, the Pink Baby Rambler with the Climbing habit.

ALL 5 MONTHLY CLIMBERS (Value \$6.00) ONLY **\$4.45**

THE YELLOW AND BLUE RAMBLERS

Here is another big 49c Special. At this price you can well afford an extensive planting along your walks, driveways and in beds for which the low growing, non-bushy plants, rarely attaining a height of more than 12 inches to 16 inches, they are absolutely hardy, blooming all summer and until frost. Three colors, red, white and pink, special at only



Baby Rambler

TWO UNUSUAL CLIMBERS

THE YELLOW AND BLUE RAMBLERS

These two different and very unusual Climbing Roses make a real addition to any Rambler collection and should be planted by everyone who has room for more Climbing Roses and appreciates the different and the distinctive. The Yellow Rambler produces large clusters of double, golden yellow flowers in great profusion. In full bloom it is a solid mass of beautiful glowing golden yellow daisies instant attention. The Blue Rose, a sport of the Crimson Rambler, is one of the most rampant growers we have ever seen, covering a large porch in a single season. Flowers are borne in loose clusters; are something entirely different from any rose you see in cultivation. Either of these great roses is special.

PAUL'S SCARLET CLIMBER

The sterling qualities of this great rose will soon far outstrip the reputation beyond that of any other Crimson Rambler. A strong grower it soon makes a good display and the brilliancy of color it is beyond compare. A bright flaming scarlet, it is absolutely free from mildew and disease as well as insects and after through blooming it makes a wonderful ornament to any garden. Very special at

DOCTOR VAN FLEET

This beautiful rose has attained a great popularity, it being one of the newer types with flowers the same as the Tea Roses. It shows a mass of beautiful flat-topped buds which open out into large, shapely flowers with stems 12 to 16 inches long. Fresh pink, never special indeed at the sale price of



Paul's Scarlet Climber

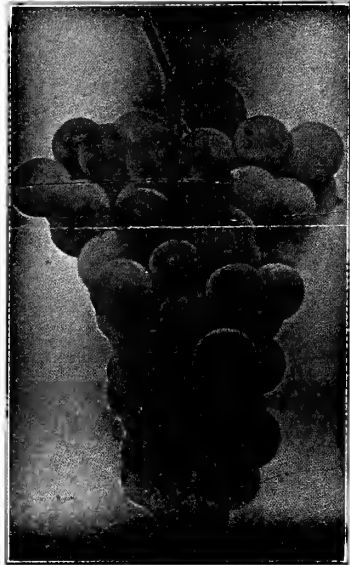
ALL PRICES ON THIS PAGE EFFECTIVE UNTIL JANUARY 1st ONLY
GROWERS' SALES CO., CLINTON, N.J.

NOVEMBER CLEAN-UP SPECIALS

5 MARVELOUS JAPANESE IRIS ONLY \$1.00

AND

5 BEAUTIFUL GARDEN IRIS FREE



Concord Grapes

CATAWBA
NIAGARA
WARDEN

Japanese Iris are marvels of beauty, often sending up a dozen spikes of flowers two to three feet high, each one bearing two to four blooms measuring six to eight inches across. The colors, markings and veinings are beyond description—lavender, violet, mauve, sky-blue, white, etc. You should certainly have some of these wonderful flowers in your garden and while our stock lasts, we will mail you 5 of the marvelous Japanese Iris in assorted colors for only \$1.00 and include absolutely FREE 5 beautiful hardy Garden Iris. Order at once, NOW, before the stock is exhausted.

5 Japanese Iris for \$1.00

AND

5 GARDEN IRIS FREE

5 BIG 2 YEAR-OLD CONCORD GRAPES

\$1.00

Concord is the best known, the most extensively planted and generally successful grape in America, so we are making this an EXTRA SPECIAL LEADER for this Great August Sale for fall delivery by pricing them at even less than 1/2 regular price, 40c each. You should plant hundreds of them at this price, if you have room to do so.

5 Concord Grapes, \$1.00

Grapes 35¢ EACH — ANY 3 OR ASSORTED \$1.00

OUR GREAT FIFTH ANNUAL FORTY-NINE CENT ROSE SALE

WILL SAVE YOU MONEY

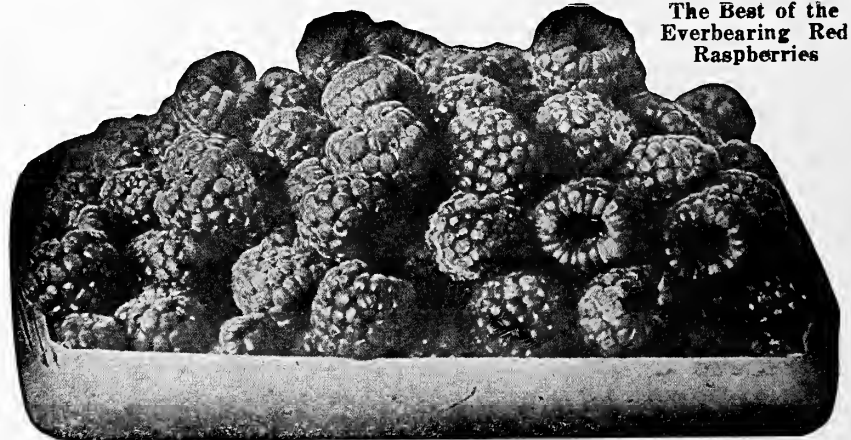
FULL PARTICULARS OF THIS GREAT ROSE SALE WILL BE FOUND ON INSIDE PAGES

20 ST. REGIS

EVERBEARING RED RASPBERRIES

\$1.00

We still have several thousand St. Regis Everbearing Red Raspberries, the best of all the everbearing varieties, which sell regularly at \$1.00 per dozen. To dispose of these quickly we will mail you 20 fine plants for only \$1.00. Invest this small amount in St. Regis Everbearing Red Raspberries and they will provide enough berries for all family uses. Stock is limited so order at ONCE.



The Best of the Everbearing Red Raspberries

St. Regis Raspberries

20 ST. REGIS EVERBEARING RED RASPBERRIES, \$1.00

Growers' Sales Co., Clinton, N. J.

Add 15c For Postage, Packing and Insurance